

## Press release

---

23 January 2014  
For immediate use

### **ARK's Evelyn Grace Academy in Brixton takes pride in the success of its first GCSEs**

**Evelyn Grace Academy in Brixton**, which is part of the high performing ARK Schools network, has demonstrated strong GCSE results with the publication of the official secondary school league tables today. In August 2013, the first cohort of students celebrated their first ever GCSE results.

Overall, the league tables confirm that **58%** of students achieved at least 5 A\*-C grades including English and mathematics. In all subjects, **77%** of students achieved at least 5 A\*-C grades.

**Principal of Evelyn Grace Academy, Devon Hanson**, said: "Everyone at Evelyn Grace Academy is tremendously proud of the achievements of our founding cadre of students. It represents a major milestone in the development of our academy."

Mathematics was a particular success story with **79%** of students achieving grade A\*- C.

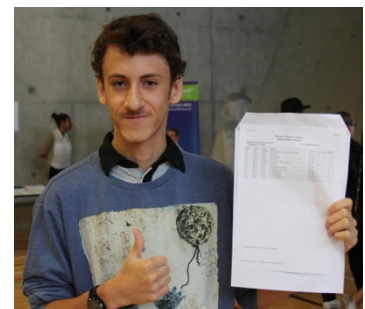
**Mark Critchard, Head of Maths at Evelyn Grace Academy**, said: "The approach to teaching mathematics at Evelyn Grace plays a large part in the success we have seen in the progress of our students' mathematical ability across all year groups. We teach Maths Mastery and focus on depth of understanding before breadth."

#### **There were some notable success stories:**

- Vicente Conte-Coutu passed 10 GCSEs with 9 at A\*/A grades
- Keanna Williams passed 10 GCSEs with 9 at A\*/A grades
- Damian Boguslawski passed 10 GCSEs with 7 at A\*/grades

**Vicente Conte, a pupil of Evelyn Grace Academy**, who attained 10 GCSEs, with 9 at A\* and A grade said: "I think these results are important. They are the first set of results that show what type of skills you have and what you can offer to a job. We've got good teachers at Evelyn Grace but you also need to have your own self-motivation."

Nationally, ARK schools are celebrating another year of improved GCSE results with the numbers of students getting 5 A\*-C grades including English and maths at our established schools rising from 56% to 61% in one year. For those schools open for more than a year when pupils took their GCSEs, on average there has been a 34 percentage point improvement in results since becoming an ARK school.



**--ENDS**

## NOTES TO EDITORS

1. **ARK's Evelyn Grace Academy** is mixed, non-selective secondary school in Lambeth with high expectations of all our students and strong ties to the local community. Evelyn Grace Academy opened in 2008 and moved into our award-winning building on Shakespeare Road in 2010. The academy offers a rigorous curriculum and a broad enrichment programme and our staff work tirelessly to support and nurture our students' talents. It is one of 27 academies run by the ARK Schools network. Find out more at <http://www.evelyngraceacademy.org/>
2. **ARK Schools** is a network of high-achieving, non-selective schools and one of the country's top-performing academy groups. We run 27 academies in London, Birmingham, Portsmouth and Hastings, educating around 14,500 pupils. 12 of the 13 ARK academies so far inspected by Ofsted are rated good or outstanding. Our aim is to create outstanding schools that give every pupil, regardless of their background, the opportunity to go to university or pursue the career of their choice. Find out more at [www.arkschools.org](http://www.arkschools.org)

**CONTACT:** For more information, please contact Alex Bigham at ARK Schools on 020 3116 0715 or 07930 183 484 or [alex.bigham@arkonline.org](mailto:alex.bigham@arkonline.org)